



PANCHAL PRODUCTION

Since - 1990



Pipeline - up Equipment, Pipe - Welding Accessories,
And Fabrication Solution

Worldwide



India's Oldest Manufacturer of Pipeline Equipment and Solutions

Established in the year **1990**, we "**Panchal Production**" are the leading **manufacturers** of a wide range of **Pipeline Equipment, Pipe Bending Equipment, Expansion Joints, Fabrication works** etc.

Panchal Production offers a wide range of products and is continuously exploring new product design and development to enhance its portfolio and to fulfil increasing Industries' demands

At Panchal Production, we are dedicated to developing our people, building partnerships and ensuring the highest quality of equipment and service for our customers in an environment focused on continuous improvement."

We will continue our endeavour to live up to those standards and use our mission statement to map the future of the company for many years to come.

Under the able and efficient guidance of our mentor **Mr. Jitendra Panchal**, our organization has achieved a commendable level in the industry. His in-depth knowledge and industry experience have enabled us to make continuous improvement in our products that keep pace with the changing demands of the market.

A long-standing tradition of responsive customer service combined with exemplary manufacturing and engineering expertise has earned Panchal Production a reputation as a preeminent equipment supplier for the pipeline industry worldwide.



OUR CLINETELE



GLOBAL HARDWARE
& TOOLS LLC

شركة الواحة الغربية الفنية ش.م.م
WESTERN OASIS
TECHNICAL COMPANY LLC



KALPA-TARU[®]

POWER TRANSMISSION LIMITED

Galfar
AL MISNAD



AL ASAB EST.
GEN. TRANSP. & CONTRACTING



Reliance
Industries Limited

AXIOM
INTERNATIONAL W.L.L

LEIGHTON



meil

Megha Engineering &
Infrastructures Limited



Punj Lloyd



Big Projects?
We have the Solution for You

Solutions for many Pipes proportions and Lowering applications



Panchal production

Interesting Machines for
Pipeline

EXTERNAL PIPE CLAMP



Hydraulic External Cage Pipe Clamp

Clamping Range: - 02" – 80"

Heavy Duty version for all nominal diameter of External Pipe Centers.

Due to widely recessed bridges of hydraulic external clamp, Upto 90% of the root pass can be welded without loosening the centering.

The hydraulic cylinder is equipped with a Locking device and is secured against the housing.

Model Number	OD mm	OD Inch
EHCC 02	60	2"
EHCC 04	114	4"
EHCC 06	168	6"
EHCC 08	219	8"
EHCC 10	273	10"
EHCC 12	323	12"
EHCC 14	355	14"
EHCC 16	406	16"
EHCC 18	457	18"
EHCC 20	508	20"
EHCC 24	610	24"
EHCC 26	660	26"
EHCC 28	711	28"
EHCC 30	762	30"
EHCC 32	813	32"
EHCC 34	864	34"
EHCC 36	914	36"
EHCC 40	1016	40"
EHCC 42	1067	42"
EHCC 44	1118	44"
EHCC 48	1219	48"
EHCC 52	1320	52"
EHCC 56	1420	56"
EHCC 60	1520	60"
EHCC 64	1620	64"
EHCC 68	1720	68"
EHCC 72	1829	72"
EHCC 76	1920	76"
EHCC 80	2032	80"



Features:

- Available in standard and no-tack (Arched bar model)
- Tightened with hydraulic jack or manually.
- Precision fitted hydraulic line up clamps to insure proper alignment and quick clamping with a convenient hand lever and hydraulic jack for quick line-up of the pipe.
- Easy to align and use.
- Flat cross bar design for all hydraulic standard line-up clamps

EXTERNAL PIPE CLAMP

Mechanical External Cage Pipe Clamp

Clamping Range: - 02" – 80"

Heavy Duty version for all nominal diameter of External Pipe Centers.

The mechanical external cage clamps are suitable for 02" – 80" and for flush tacking. The pipe ends are clamped via the eccentric by the means of bars.

Model Number	OD mm	OD Inch
EMCC 02	60	2"
EMCC 04	114	4"
EMCC 06	168	6"
EMCC 08	219	8"
EMCC 10	273	10"
EMCC 12	323	12"
EMCC 14	355	14"
EMCC 16	406	16"
EMCC 18	457	18"
EMCC 20	508	20"
EMCC 24	610	24"
EMCC 26	660	26"
EMCC 28	711	28"
EMCC 30	762	30"
EMCC 32	813	32"
EMCC 34	864	34"
EMCC 36	914	36"
EMCC 40	1016	40"
EMCC 42	1067	42"
EMCC 44	1118	44"
EMCC 48	1219	48"
EMCC 52	1320	52"
EMCC 56	1420	56"
EMCC 60	1520	60"
EMCC 64	1620	64"
EMCC 68	1720	68"
EMCC 72	1829	72"
EMCC 76	1920	76"
EMCC 80	2032	80"



Features:

- Available in standard and no-tack (arched bar model)
- Tightened with hydraulic jack or manually.
- Precision fitted hydraulic line up clamps to insure proper alignment and quick clamping with a convenient hand lever and hydraulic jack for quick line-up of the pipe.
- Easy to align and use.
- Flat cross bar design for all hydraulic standard line-up clamps



INTERNAL PIPE LINE – UP CLAMPS

Internal Pneumatic Lineup Clamps



FEATURES

- Standard sizes 6"-60", available upon request
- Clamps 12"-60" will cover two pipe sizes by use of conversion kits
- Adjustable for the various wall thickness within clamp's range
- Powered travel drives available on models 12"-60"
- For efficient operation, the compressed air pressure should be 180-200 PSI. (12.4-13.8 Bar)
- Maximum safe working pressure in 225 PSI (15.5 Bar)



NON-POWERED CLAMP (PULL TYPE)

MODEL	PIPE SIZE (in/mm)	LENGTH (in/mm)	WIDTH (in/mm)	HEIGHT (in/mm)	VOLUME (cu-ft/cu-m)	WEIGHT (lbs/kg)
IPLC 6	6 / 152	38 / 965	5.5 / 140	6.5 / 165	0.8 / 0.02	98 / 45
IPLC 8	8 / 203	50 / 1270	7.5 / 191	7.5 / 191	1.6 / 0.05	130 / 59
IPLC 10 2-SECTION	10 / 254	58 / 1473	12 / 305	12 / 305	4.8 / .014	178 / 81
IPLC 10 3-SECTION	10 / 254	58 / 1473	12 / 305	12 / 305	4.8 / 0.14	212 / 96
IPLC 12 2-SECTION	12-14 / 324-356	60 / 1524	10.75 / 273	10.75 / 273	4.0 / 0.11	204 / 93
IPLC 12 3-SECTION	12-14 / 324-356	60 / 1524	10.75 / 273	10.75 / 273	4.0 / 0.11	257 / 117
IPLC 14-16	14-16 / 356-406	67 / 1702	13 / 330	13.5 / 343	6.8 / 0.19	225 / 102
IPLC 18-20	18-20 / 457-508	96 / 2438	16.5 / 419	18.5 / 470	17.0 / 0.48	418 / 190

POWERED CLAMP (LINE TRAVEL)

MODEL	PIPE SIZE (in/mm)	LENGTH (in/mm)	WIDTH (in/mm)	HEIGHT (in/mm)	VOLUME (cu-ft/cu-m)	WEIGHT (lbs/kg)
IPLC 10	10 / 254	62 / 1575	10 / 254	11.5 / 292	4.1 / 0.12	300 / 136
IPLC 12-14	12-14 / 305	109 / 2769	10.75 / 273	10.75 / 273	7.3 / 0.21	294 / 133
IPLC 14-16	14-16 / 356-406	112.5 / 2858	15 / 381	15 / 381	14.6 / 0.41	550 / 240
IPLC 16-18	16-18 / 406-457	91 / 2311	13 / 330	13 / 330	8.9 / 0.32	500 / 227
IPLC 20-22	20-22 / 508-559	102 / 2591	18 / 457	18 / 457	19.1 / 0.69	770 / 349
IPLC 24-26	24-26 / 610-660	111 / 2819	21 / 533	21 / 533	28.3 / 1.05	1010 / 458
IPLC 28-30	28-30 / 711-762	115 / 2870	28 / 711	28 / 711	52.2 / 1.45	1290 / 585
IPLC 30-32	30-32 / 762-813	115 / 2870	28 / 711	28 / 711	52.2 / 1.73	1400 / 635
IPLC 34-36	34-36 / 864-914	122 / 3099	34 / 864	35.5 / 902	85.2 / 2.41	1700 / 773
IPLC 36-38	36-38 / 914-965	128 / 3251	36 / 914	37.5 / 953	100.0 / 2.83	1750 / 795
IPLC 40-42	40-42 / 1016-1067	141 / 3581	38 / 965	38 / 965	117.8 / 3.94	3100 / 1406
IPLC 46-48	46-48 / 1168-1219	145 / 3683	45 / 1143	46.5 / 1181	175.6 / 4.97	3140 / 1427
IPLC 52-54	52-54 / 1321-1372	188 / 4775	52 / 1321	53.5 / 1359	302.7 / 8.57	4950 / 2250
IPLC 56	56 / 1422	188 / 4775	54 / 1372	55.5 / 1410	326.1 / 9.23	5400 / 2455
IPLC 60	60 / 1524	191 / 4851	58 / 1473	60 / 1524	384.7 / 10.89	6000 / 2727

INTERNAL PIPE LINE – UP CLAMPS

Hydraulic Internal Lineup Clamp



Easy to operate

- Requires no outside power unit
- Precision manufactured; field proven
- Each clamp machined for specific wall thickness and pipe O.D.
- Heavy duty all steel construction
- Standard 12" to 60"
- Available through 100"

Mechanical Internal Lineup Clamp



Toggle action puts maximum power on pipe

- "Gap" is unobstructed for fuller stringer bead
- Heavy duty jack box puts more power on the pipe with less operator effort
- Each clamp machined for specific wall thickness and pipe O.D.
- Available with copper back-up ring
- Standard 12" to 60"

Our superior quality Internal Pipe Alignment Clamp/ Internal Clamps are manufactured using Mild steel. These clamps have unique features of, durability, sturdy construction and accurate dimensions. Designed to meet the customized specifications provided by the clients, our range operates on screw jack type/ hydraulic mechanism in order to have adequate alignment.



ADJUSTABLE PIPE FIT-UP CLAMP



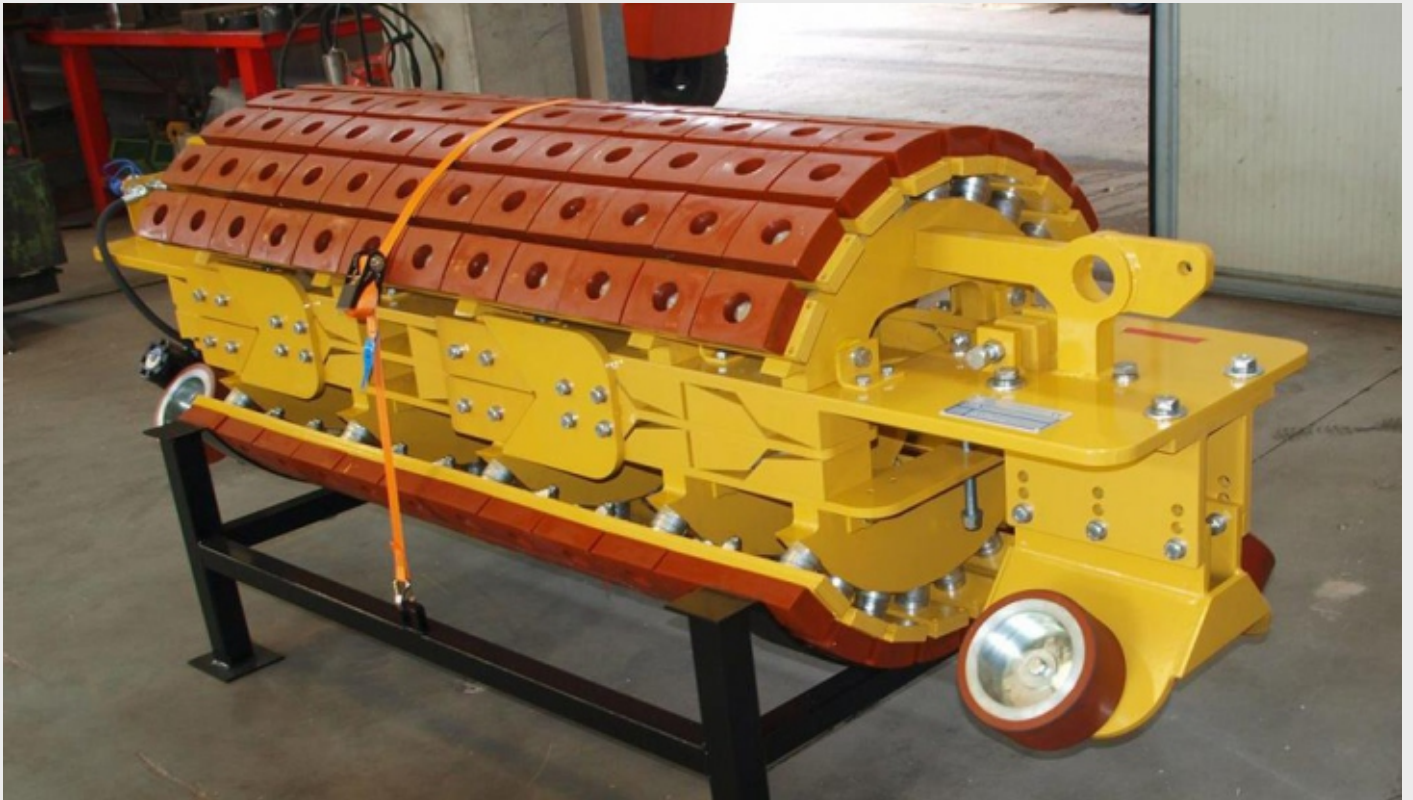
- It Can Be used for welding all type of Materials
- Pipe to Pipe, Pipe to Elbow Fitting can be easily Done.
- Instant Centring
- Combines Accuracy and Safety
- Forged Steel Construction



- Quick and easy to use
- Ultra robust design, ideal for site work
- Stainless steel contact points as standard
- Fine adjustment screws for quick fit-up
- Lightweight for overhead work

MODEL NO	Minimum Pipe range	Maximum Pipe Range	Weight
PAPFC – 02"-06"	02" (60.3mm)	06"(168.3 mm)	1.5 kg approx.
PAPFC – 06"-08"	06" (168.3mm)	08" (219.1mm)	3.5 kg approx..
PAPFC – 10"-12"	10" (273 mm)	12" (323.9 mm)	7.0 kg approx.
PAPFC – 16"-18"	16" (406.4mm)	18" (457 mm)	10.0 kg approx.

Hydraulic Wedge Mandrel



Features: -

- The Hydraulic Wedge Mandrel is used specifically to meet bending requirements of X65 and higher-grade pipes. Operator controls all functions of the mandrel.
- Helps reduce buckling and out of round in the bend
- Power is provided by the bending machine hydraulic system or by an auxiliary power unit
- Models cover pipe sizes 24" – 60"
- PIPE RANGES 24" – 30" | 30" – 36" | 36" – 42" | 40"- 48" | 52" – 60"
- Fast approach and powerful locking action is provided by double angle hardened steel wedges
- Auxiliary hydraulic power units and conversion kits (within mandrel's range) available at additional cost
- Non-Powered available 6" – 20"
- Powered available 12" – 60"

Specification:- For Pipe up to 60inch

MODEL	PIPE SIZE (in/mm)	LENGTH (in/mm)	WIDTH (in/mm)	HEIGHT (in/mm)	VOLUME (cu- ft/cu-m)	WEIGHT (lbs/kg)
PHWM 6	6 / 152	61 / 1549	6 / 152	6 / 152	1.3 / 0.04	150 / 68
PHWM 8	8 / 203	71 / 1803	8.5 / 216	8.5 / 216	3.0 / 0.08	200 / 91
PHWM 10-12	10-12 / 254-305	88 / 2235	11.5 / 292	11.5 / 292	6.7 / 0.19	564 / 256
PHWM 12-14	12-14 / 305-356	108 / 2743	11 / 279	11 / 279	7.6 / 0.21	680 / 309
PHWM 16	16 / 406	108 / 2743	14 / 356	14 / 356	12.3 / 0.35	754 / 343
PHWM 18-20	18-20 / 457-508	108 / 2743	18 / 457	18 / 457	20.3 / 0.57	820 / 373
PHWM 20-22	20-22 / 508-559	124 / 3150	18 / 457	18 / 457	23.3 / 0.66	950 / 432
PHWM 24-26	24-26 / 610-660	140 / 3556	20 / 508	20 / 508	32.4 / 0.92	2310 / 1050
PHWM 28-30	28-30 / 711-762	140 / 3556	26 / 660	26 / 660	54.8 / 1.55	2700 / 1227
PHWM 30-32	30-32 / 762-813	140 / 3556	27 / 686	27 / 686	59.1 / 1.67	3200 / 1455
PHWM 34-36	34-36 / 864-914	125 / 3175	31 / 787	31 / 787	69.5 / 1.97	4500 / 2045
PHWM 36-38	36-38 / 914-965	160 / 4064	32 / 813	32 / 813	95 / 2.68	5650 / 2568
PHWM 40-42	40-42 / 1016-1067	160 / 4064	38 / 965	38 / 965	134 / 3.79	6350 / 2886
PHWM 42-44	42-44 / 1067-1118	160 / 4064	38 / 965	38 / 965	134 / 3.79	6350 / 2886
PHWM 46-48	46-48 / 1168-1219	150 / 3810	43 / 1092	43 / 1092	161 / 4.54	7000 / 3182
PHWM 52	52 / 1321	186 / 4724	45 / 1143	47 / 1194	228 / 6.45	10000 / 4545
PHWM 56	56 / 1422	186 / 4724	46 / 1168	50 / 1270	248 / 7.01	12000 / 5455
PHWM 60	60 / 1524	186 / 4724	50 / 1270	54 / 1372	291 / 8.23	15000 / 6818



PIPE ROLLER CRADLE & SLING



Design Features:-

- Various cradle assemblies for pipe sizes 6" (152mm) through 60" (1524mm) welded seam hang-up
- Slings for pipe sizes 2" (51mm) through 24" (610 mm)
- Designed load capacity ensures safe handling of heavy wall pipe
- Multiple urethane rollers spaced to support the pipe evenly
- Replacement cradle rollers available
- Custom sizes available upon request.
- We use springs between rollers which allows rollers to align themselves depending on the load, and reduces cable wear. Some competitors use pipe or cable clamps.

Caution:-

- Roller Cradles & Slings designed for vertical lifting only
- Never stand under a pipe when lifting or loading
- Uneven load distribution imposes disproportionate loading on the individual sling legs

Technical Specifications:-

Double Head Roller Cradle

Model	Range		No. of Rollers	Capacity	
	in	mm		Lbs.	Tons.
PPRC 6-12D	06" - 12"	152 - 305	20	16,923	8.5
PPRC 12-24D	12" - 24"	305 - 610	24	26,662	13.3
PPRC 24-36D	24" - 36"	610 - 914	28	56,500	28.25
PPRC 36-48D	36" - 48"	914 - 1219	32	69,389	35
PPRC 48-60D	48" - 60"	1219 - 1524	36	1,05,380	52

Note: Single cradle has 1 cable strand looped over the head iron

Dual cradle has 2 cable strands looped over the head iron

Single Head Roller Cradle

Model	Range		No. of Rollers	Capacity	
	in	mm		Lbs.	Tons.
PPRC 6-12S	06" - 12"	152 - 305	10	12,000	6
PPRC 12-24S	12" - 24"	305 - 610	12	13,331	6.6
PPRC 24-36S	24" - 36"	610 - 914	14	28,250	14.1
PPRC 36-48S	36" - 48"	914 - 1219	16	34,694.5	17.3
PPRC 48-60S	48" - 60"	1219 - 1524	18	52,690	26.3

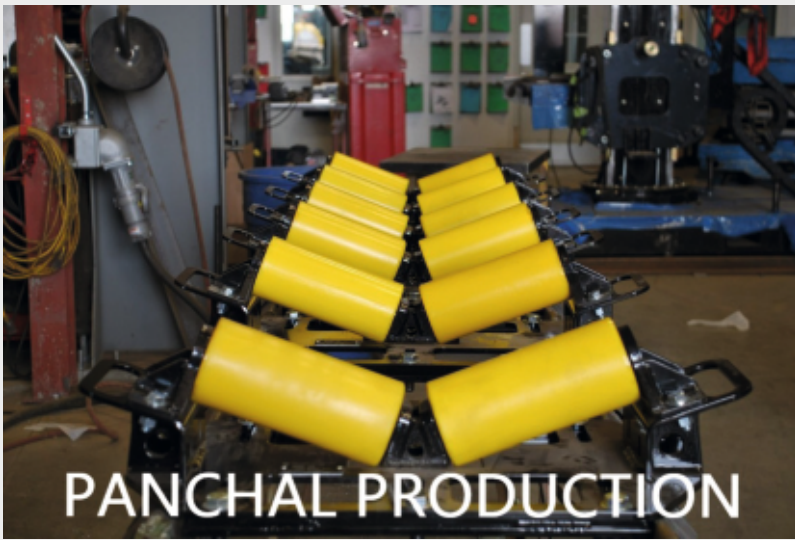
SLINGS

Size	Number of Roller	Capacity	
in		Lbs.	Tons.
02" - 08"	3	15,600	7.8
08" - 12"	5	15,600	7.8
12" - 24"	7	15,600	7.8

Note :- Slings are not intended to replace Roller Cradles for lifting pipe, Consult factory for usage guidelines.



PIPE PUSHING ROLLERS



Protect Pipe Coating: Our equipment keeps your piping installation safe while crossing dangerous terrain, like rivers and roads. Its protective coatings reduce drag forces so you can focus on the job at hand with confidence

Worker Safety: Worker safety is paramount, and our beam clamp rollers heavy materials can be safely maneuverer within a job site – promoting efficiency without compromising the wellbeing of workers.

Increase Loading Speed: With our beam clamp rollers, the loading process for modular construction pipes can be swift and efficient - ensuring your project is always on track

Model Number	Pipe Range	Rollers	Capacity
PCPPR - 224	2" - 24"	Cone Type	01 ton
PPRR - 1248	12" - 48"	2 Rollers	05 ton
PPRR - 1248D	12" - 48"	4 Rollers	10 ton
PPRR - 860HD	8" - 60"	4 Rollers	20 ton
PPRR - 472HD6	4" - 72"	6 Rollers	40 ton



Specifications :-

- Replaceable urethane wheels unbolt in seconds.
- Convenient and safe carry handles on both models.
- Beam clamp rigging rollers offer a unique clamping mechanism that fastens to I-beams safely and quickly.
- When mounted to a stand, the rollers are perfect for pipeline construction and directional drilling.
- They also nest and stack efficiently for shipping!
- Great for rental fleets. Beam rollers to launchers and vice versa in seconds.

STEEL LINED CHOKER BELTS



Features:-

Aligns pipe exactly without slippage for bending, welding, etc.

- Roll pipe, pull pipe, secure extreme bends-all without damage
- Fastest tool available for positioning and handling pipe
- Fully adjustable for coating thickness
- Super Heavy-Duty Barrier webbing for increased life and gripping efficiency
- Easily repairable in field for longer life
- Used around the world on pipe up to 60"
- Replacement Parts Available

Part#	Max. Pipe Diameter		Belt Width		Approx Weight		Rated Capacity	
	inches	mm	inches	mm	lbs.	kg	lbs.	kg
BLC-110	10"	254	8"	203	50	23	7,600	3,447
BLC-112	12"	305	8"	203	93	42	7,600	3,447
BLC-114	14"	356	8"	203	109	49	7,600	3,447
BLC-116	16"	406	8"	203	115	52	7,600	3,447
BLC-118	18"	457	8"	203	120	54	7,600	3,447
BLC-120	20"	508	8"	203	125	57	7,600	3,447
BLC-124	24"	607	8"	203	133	60	16,800	7,620
BLC-126	26"	660	8"	203	137	62	16,800	7,620
BLC-128	28"	711	8"	203	140	64	16,800	7,620
BLC-130	30"	762	8"	203	142	64	16,800	7,620
BLC-136	36"	660	8"	203	160	73	16,800	7,620
BLC-140	40"	1016	8"	203	190	86	21,400	9,707
BLC-142	42"	1067	8"	203	200	91	21,400	9,707
BLC-148	48"	1219	8"	203	210	95	21,400	9,707
BLC-156	56"	1422	8"	203	225	102	27,200	12,338
BLC-160	60"	1524	8"	203	235	107	27,200	12,338

PIPE LOWERING – IN BELTS



Features: -

- Heavy duty polyester webbing for durability and strength
- Alloy steel end irons for greater strength with less weight
- Web coated with heavy duty Yellow Jacket™ Coating
- Orange vinyl tag with clear protective cover to protect data
- End irons painted
- Custom belts available for pipe diameters not listed
- Belts used around the world, in all types of climates, in sizes up to 60" diameter pipe
- Lowering-in belt and head iron sold separately

Part#	Max Pipe Diameter		Belt Width		Belt Length		Approximate Weight		Rated Capacity	
	in	mm	in	mm	ft.-in	m	Lbs.	Kg	Lbs.	Kg
BLL-0212	12"	305	12"	305	4' - 9"	1.45	32	14.5	48,000	21,772
BLL-0418	18"	457	18"	457	7' - 0"	2.13	52	23.6	73,000	33,112
BLL-0420	20"	508	18"	457	7' - 6"	2.29	55	24.9	73,000	33,112
BLL-0524	24"	610	24"	610	8' - 6"	2.59	81	36.7	97,000	43,998
BLL-0630	30"	762	30"	762	10' - 0"	3.05	90	40.8	122,000	55,338
BLL-0736	36"	914	36"	914	11' - 6"	3.51	120	54.4	146,000	66,224
BLL-0742	42"	1067	36"	914	13' - 6"	4.11	135	61.2	146,000	66,224
BLL-0748	48"	1219	36"	914	15' - 0"	4.57	155	70.3	146,000	66,224
BLL-0842	42"	1067	42"	1067	13' - 6"	4.11	150	68.0	171,000	77,564
BLL-0848	48"	1219	42"	1067	15' - 0"	4.57	170	77.1	171,000	77,564
BLL-0948	48"	1219	48"	1219	15' - 0"	4.57	200	90.7	195,000	88,450
BLL-0956	56"	1422	48"	1219	17' - 0"	5.18	222	100.0	195,000	88,450
BLL-1156	56"	1422	56"	1422	17' - 0"	5.18	250	113.0	228,000	103,418
BLL-1160	60"	1524	56"	1422	18' - 0"	5.49	270	122.0	228,000	103,418

Pipe Cutting & Beveling Machines



OVERVIEW

Panchal Production Band and Crawlers set the industry standard for cutting and beveling large diameter pipe. Our unique Right Angle Drive attachment is ideal for tight spaces with 6" of clearance. Motorized crawlers travel at three times the speed of a typical acetylene cut. Flexible stainless steel beveling bands adapt to any cutting and beveling situation for a smooth, consistent cut.

CLASSIC TORCH HOLDER

- Move torch to and from the cutline to prevent blowholes
- Torch may be used in forward or backward bevel position
- Large wing screws can be tightened without removing gloves
- Provides a superior cut and bevel



FEATURES AND BENEFITS

- Available for pipe 6" and larger
- One crawler fits all band sizes
- Precision cast for rugged strength
- Perfect for tight spaces – with a Right-Angle Drive Kit, only 6" of clearance is needed
- Out-of-round attachment unnecessary
- Motorized Drive optional
- Durable stainless-steel bands mount anywhere on the pipe
- Above 60" - special order

Chain Type Pipe Cutting Machine

The TUBOCUT-CS is a motorized oxy-fuel and plasma pipe cutting machine with remote control. The special fixed rail for the torch/ tip guidance system provides high cutting accuracy and makes the TUBOCUT-CS ideally suited for large pipes. The TUBOCUT-CS is portable and easy to set-up just about anywhere

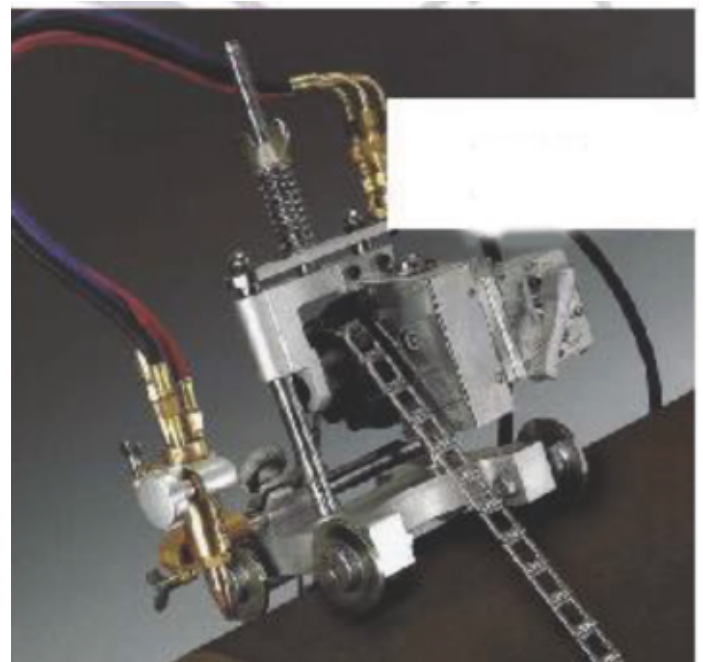
The TUBOCUT-CS portable oxy-fuel cutting machine can also be used for cutting exotic materials such as stainless steel, by converting from oxy-fuel to a plasma system (plasma torch holder available on request).



Auto Pipe Cutting Machine

HIGHLIGHTED FEATURES

- The machine can cut pipes of diameter 100mm or more by quickly and easily changing the length of the chain.
- Cutting can be done in clockwise or anti-clockwise direction from both sides of the machines.
- The machine can cut bevels of up to 45° by selecting the required angle on the torch holder.
- The machine torch can be adjusted vertically and horizontally alongside the pipe surface by rack and pinion attachments.
- To prevent rust and wear, the gear wheels have been hardened with nitrogen and painted black.



Cutting with Plasma



Transformer
110v-220



Remote
control



Interlocking
chain link



Torch unit
assembly

Portable light in weight yet robust.

Can cut any pipe diameter from 100mm and upwards.

Cuts up to 100mm pipe thickness

Automatic Magnetic Pipe Cutting Machine

EASY SET-UP | Mount and begin cutting in as little as 5 minutes

ADAPTABLE | Works with all standard torches, including plasma

PRECISE | Produces square cuts and exact bevels quickly and easily

VERSATILE | Every model works on a range of pipe sizes

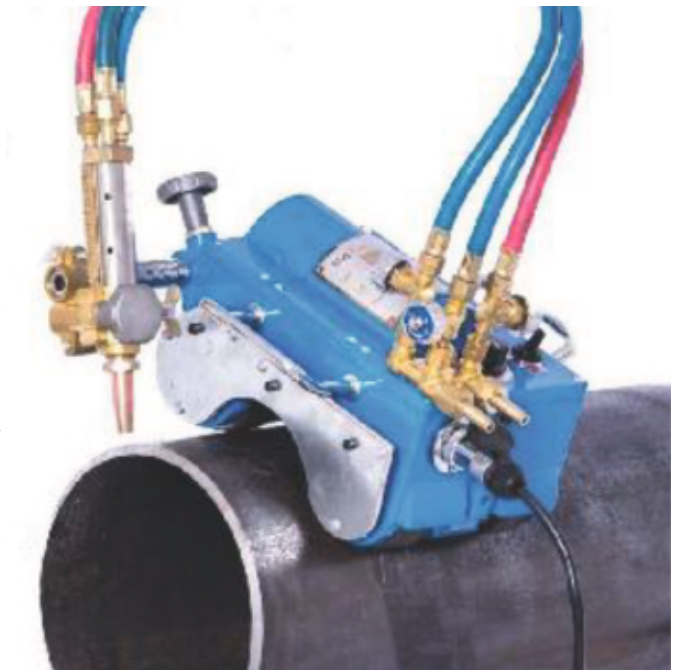
PROVEN | Depended on by professionals for over 40+ years

FASTER | Pipe is ready to weld up to five times quicker than hand cutting and grinding

SMOOTHER BEVELING | Precise pipe - to - torch distance maintained throughout the cut for more accurate beveling

INTERCHANGEABLE | Use the Pro Model Torch Arm with your

Current torch holder and adapter for oversized and undersized pipe

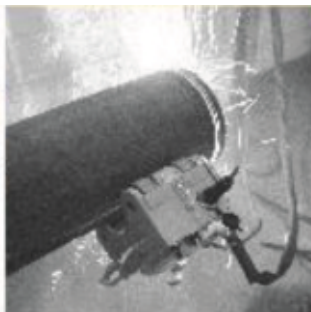


Auto Magnetic Pipe Plasma & Flame Cutting Machine

Oxy Fuel Cutting



Plasma Cutting



Vertical Plate Cutting



The versatile TUBOCUT-MS is an excellent tool for cutting, beveling, and welding. It secures to work surfaces with 300 pounds of magnetic force

It can also make flawless welds on steel plate and other flat surfaces, with travels speeds from 50 mm to 1150 mm) per minute.

SPECIFICATIONS	TUBOCUT-MS
Input voltage (V)	Ac220/110V, 50/60 Hz
Effective pipe diameter, mm	100mm onwards
Cutting thickness, mm	5 to 100
Cut/Bevel Angle	Variable up to 45 Degree
Cutting Speed, mm/min	50 - 1150
Cutting shape	Square and bevel (up to 45°)
Drive method	Motorized
Speed control	SCR
Motor power (W)	70
Power of the inverter (W)	158
Speed adjustment	By dial
Cutting torch	Injector type
Dimensions (mm)	350x310x280 (LxWxh)
Weight (kg)	20

HIGHLIGHTED FEATURES

- The versatile TUBOCUT-MS is an excellent tool for cutting, beveling, and welding.
- Designed to elevate the TUBOCUT-MS torch holder to accommodate a plasma machine torch or a machine welding torch.
- The TUBOCUT-MS cuts pipe with inside diameters of 24"(610mm) and larger.
- Vertical or horizontal I-beam 20"(508mm) wide or wider can be precision cut with the TUBOCUT-MS
- Vertical or horizontal Plate 12"(305mm) wide or wider can be precision cut with TUBOCUT-MS.
- Pipe diameters 16"(406mm) and larger can be cut lengthwise.

Other Pipeline Equipment & Accessories

Pipe End Heating Torch



Internal Pipe end Heating Torch



External Pipe End Heating Torch

Pipe Lifting Hook



Pipeline Pigging



Magnetic Bi-Di Brush pig



Four Cup pig with Brush

Sand Blasting Hopper



Pipe Carts



Internal Pipe Casing Roller



PANCHAL PRODUCTION

Pipe Support Stands



Expansion Joints



World Class Expansion Joints

Since 1990 We has designed and manufactured metallic expansion joints. Through the years we have successfully supplied clients worldwide within many different industries. Years of experience within design and manufacture of expansion joints combined with advanced engineering and the application of innovative technologies has established Panchal Production as a recognized provider on the global market.

We Provide the following Expansion Bellows: -

- Axial Bellows
- Stainless Steel bellows
- Double Bellows
- Universal Bellows
- Pressure Balanced In-Line Bellow
- Steam Line Expansion Joints
- Fabricated Bellows
- Metal Hose Bellow
- Gimbal Bellows
- Square Bellows Etc.

Available from all size range. We also provide Customized Solutions

Fabrication Works



Vibrating Screen



Crusher Machine





Our Presence

Reach Us :



325/A, Manjusar GIDC, Near Bombardier Circle,
Savli, Vadodara, Gujarat, India, Pin Code :- 391775



panchal_product@yahoo.com
panchalproduction@yahoo.com



+91 - 98981 07532 (Chairman)
+91 - 74900 53236 (Managing Director)



www.expansionbellow.com, www.panchalproduction.com

